

Anti-Histone H4 (pS47) Antibody
Rabbit polyclonal antibody to Histone H4 (pS47)
Catalog # AP60064**Specification**

Anti-Histone H4 (pS47) Antibody - Product Information

Application	WB, IF/IC
Primary Accession	P62805
Reactivity	Human, Rat
Host	Rabbit
Clonality	Polyclonal
Calculated MW	11367

Anti-Histone H4 (pS47) Antibody - Additional Information

Gene ID 121504;554313;8294;8359;8360;8361;8362;8363;8364;8365;8366;8367;8368;8370

Other Names

H4/A; H4FA; H4/I; H4FI; H4/G; H4FG; H4/B; H4FB; H4/J; H4FJ; H4/C; H4FC; H4/H; H4FH; H4/M; H4FM; H4/E; H4FE; H4/D; H4FD; H4/K; H4FK; H4/N; H4F2; H4FN; HIST2H4; H4/O; H4FO; Histone H4

Target/Specificity

KLH-conjugated synthetic peptide encompassing a sequence within the center region of human Histone H4 (pS47). The exact sequence is proprietary.

Dilution

WB~~WB (1/500 - 1/1000), IF/IC (1/100 - 1/500)
IF/IC~~N/A

Format

Liquid in 0.42% Potassium phosphate, 0.87% Sodium chloride, pH 7.3, 30% glycerol, and 0.09% (W/V) sodium azide.

Storage

Store at -20 °C. Stable for 12 months from date of receipt

Anti-Histone H4 (pS47) Antibody - Protein Information

Name H4C1

Synonyms H4/A, H4FA, HIST1H4A

Function

Core component of nucleosome. Nucleosomes wrap and compact DNA into chromatin, limiting DNA accessibility to the cellular machineries which require DNA as a template. Histones thereby play a central role in transcription regulation, DNA repair, DNA replication and chromosomal stability. DNA accessibility is regulated via a complex set of post-translational modifications of histones, also called histone code, and nucleosome remodeling.

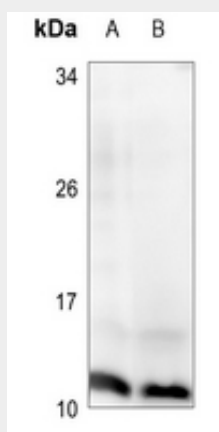
Cellular Location

Nucleus {ECO:0000250|UniProtKB:P62806}. Chromosome. Note=Localized to the nucleus when acetylated in step 11 spermatids. {ECO:0000250|UniProtKB:P62806}

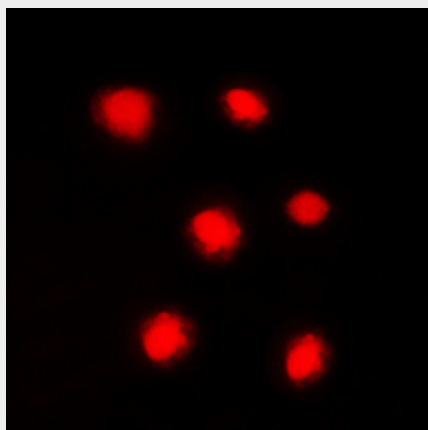
Anti-Histone H4 (pS47) Antibody - Protocols

Provided below are standard protocols that you may find useful for product applications.

- [Western Blot](#)
- [Blocking Peptides](#)
- [Dot Blot](#)
- [Immunohistochemistry](#)
- [Immunofluorescence](#)
- [Immunoprecipitation](#)
- [Flow Cytometry](#)
- [Cell Culture](#)

Anti-Histone H4 (pS47) Antibody - Images

Western blot analysis of Histone H4 (pS47) expression in HEK293T (A), U2OS (B) whole cell lysates.



Immunofluorescent analysis of Histone H4 (pS47) staining in HeLa cells. Formalin-fixed cells were permeabilized with 0.1% Triton X-100 in TBS for 5-10 minutes and blocked with 3% BSA-PBS for 30 minutes at room temperature. Cells were probed with the primary antibody in 3% BSA-PBS and incubated overnight at 4 °C in a humidified chamber. Cells were washed with PBST and incubated

with a DyLight 594-conjugated secondary antibody (red) in PBS at room temperature in the dark.

Anti-Histone H4 (pS47) Antibody - Background

KLH-conjugated synthetic peptide encompassing a sequence within the center region of human Histone H4 (pS47). The exact sequence is proprietary.